



"Celtic Christmas"

designed by Marilyn Leavitt-Imblum

Stitched on 28 count Dusty Green Linen
(2 over 2) from Wichelt Imports, or 28 count
Natural Cashel Linen (2 over 2) from Zweigart.
Stitch count 159 x 238. Design area 11 1/3" x 17".
Frame No. 601 from Larson-Juhl.

DMC	E 758	U 936
• 321 (2)	▲ 780	— 948
* 356	★ 781	♥ 3371
B 433	U 783	• 3820
△ 434	• 801	▲ 3822
L 435	s 814 (2)	✈ 3823
I 469	O 815 (3)	♦ 814 +
/ 498 (2)	▀ 898	3371
+ 754	X 934 (2)	■ 284Z

() indicates number needed

Mill Hill Beads from Gay Bowles Sales

□ 00557 (468)	● 03003 (378)
♡ 02011 (35)	○ 62020 (369)

Backstitch Instructions

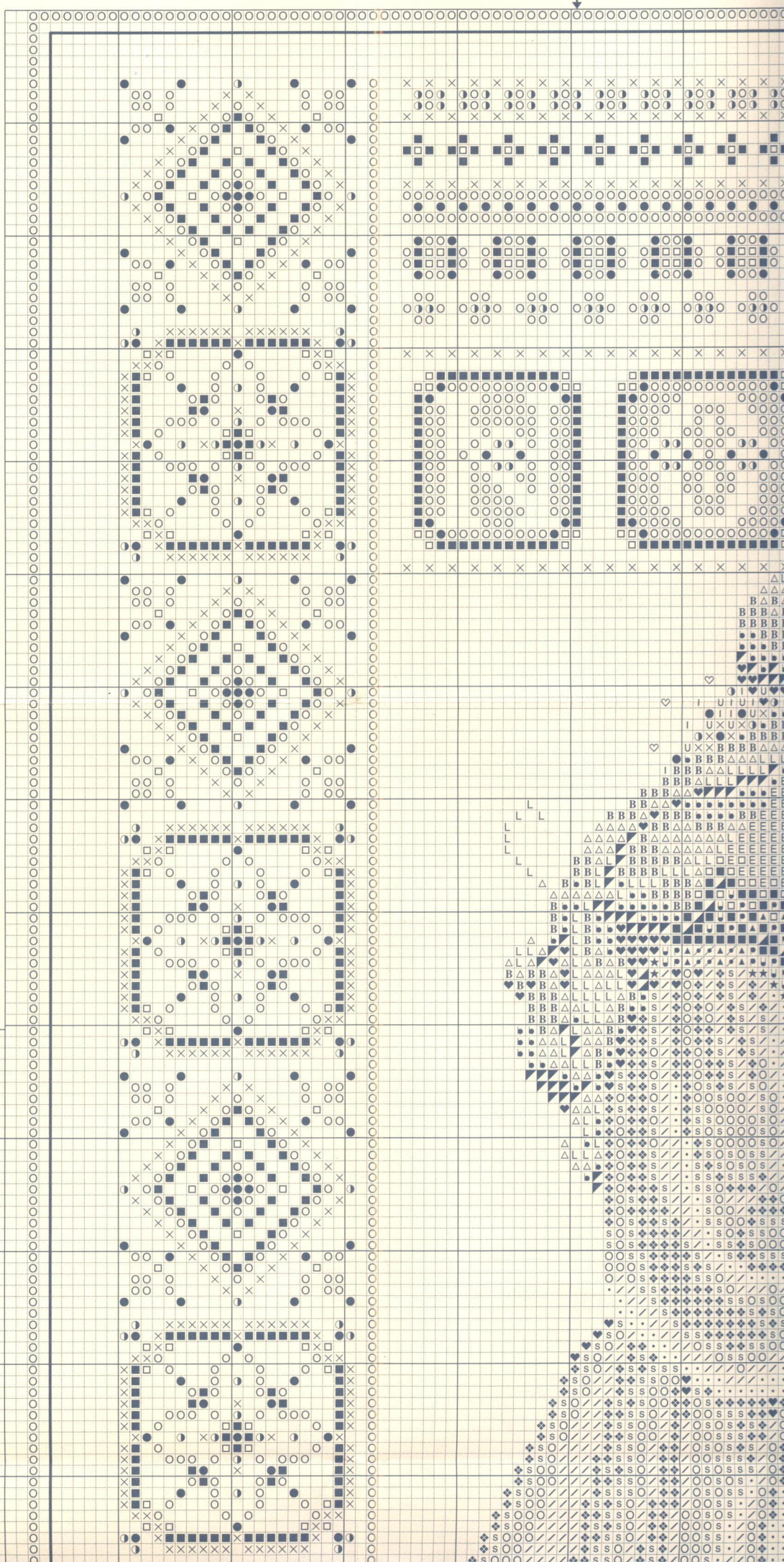
- Border in 934
- Face in 356
- Eye in 3371
- Candle tips are in 284Z

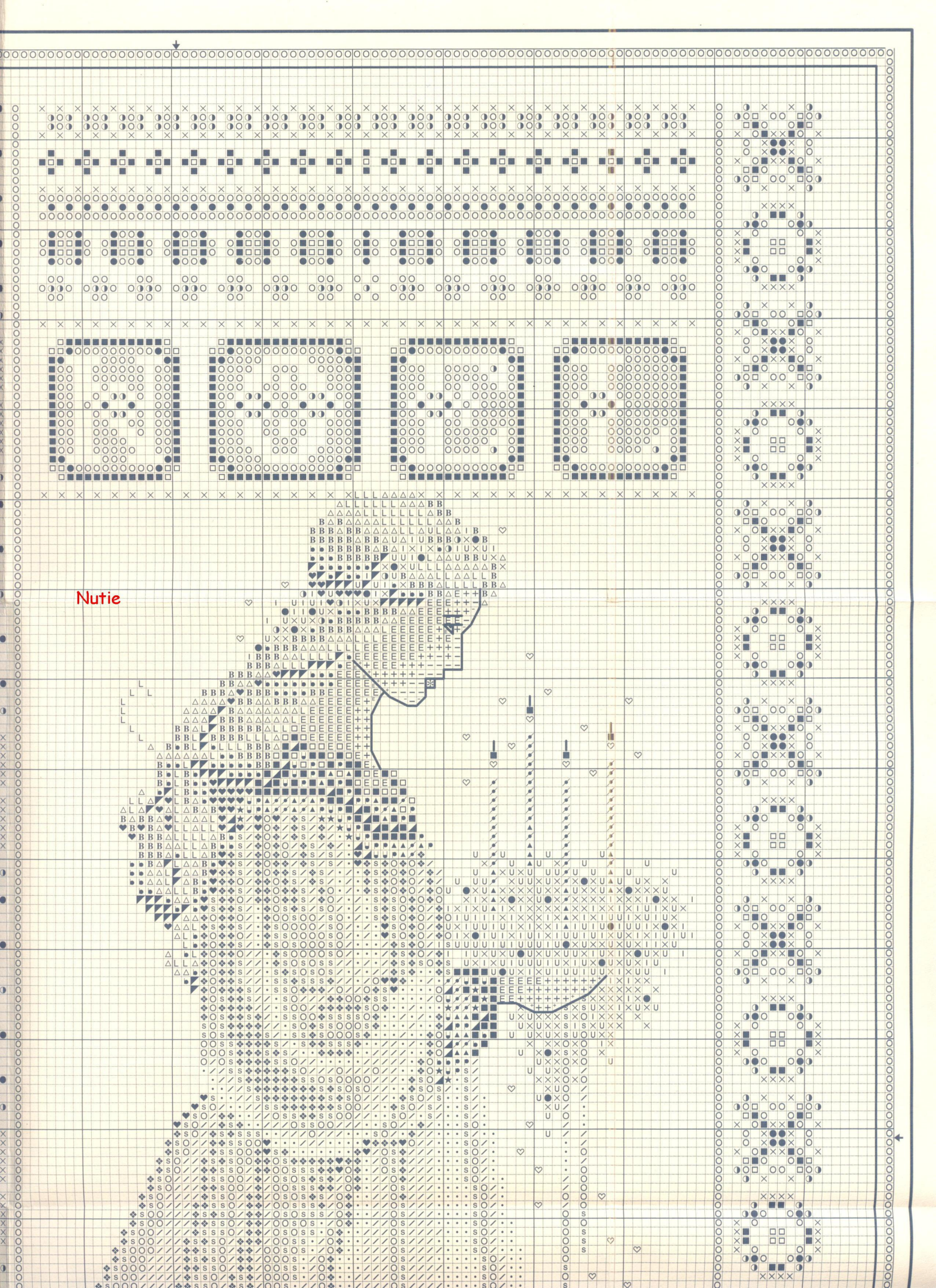
"Celtic Christmas" by Marilyn Leavitt-Imblum
Copyright © 1995 Told in a Garden.
All rights reserved. May not be reprinted.

Lavender & Lace

Told in a Garden
Hoffman Media, Inc.
1900 International Park Drive
Suite 50
Birmingham, AL 35243
www.tiag.com

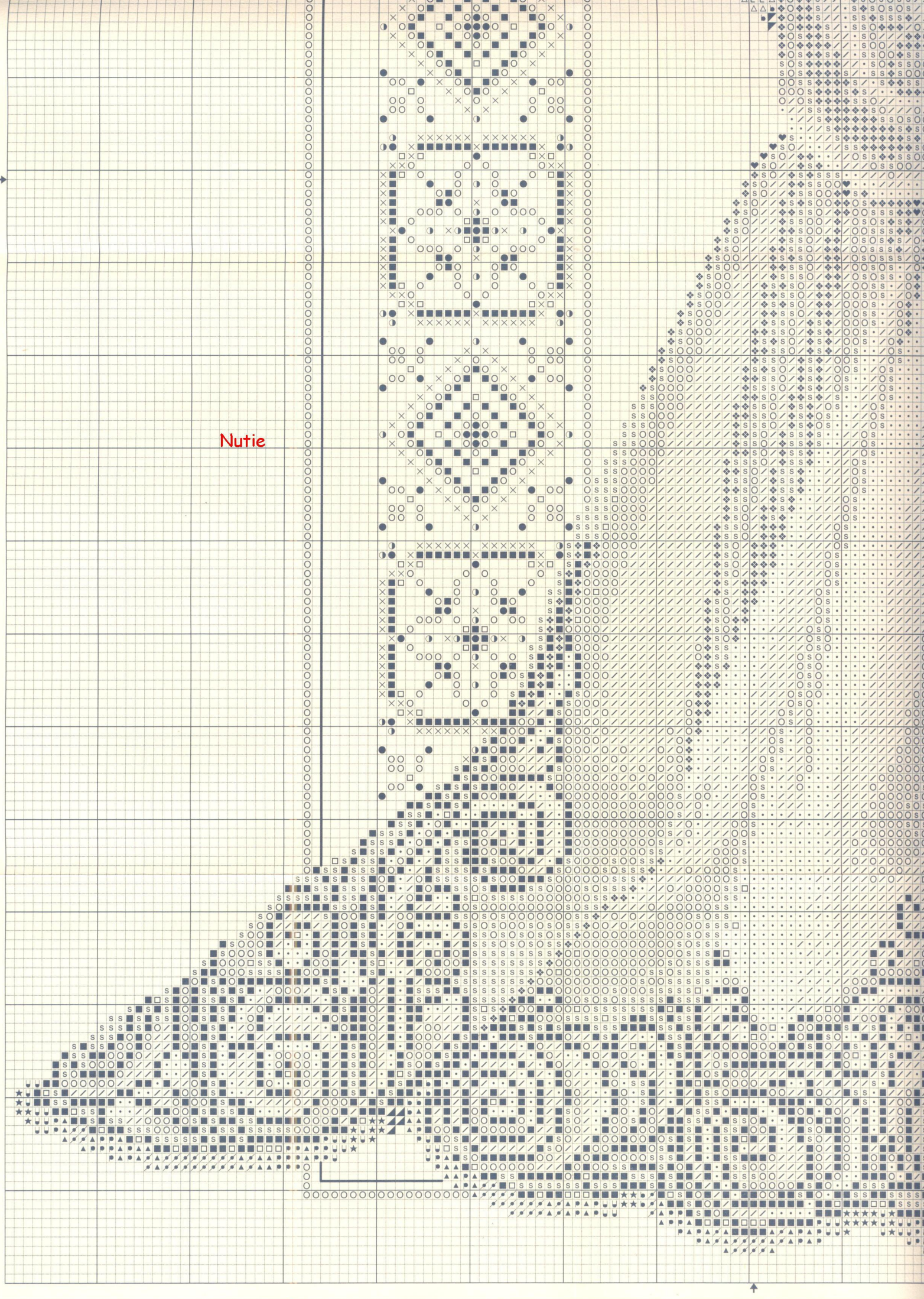
Nutie

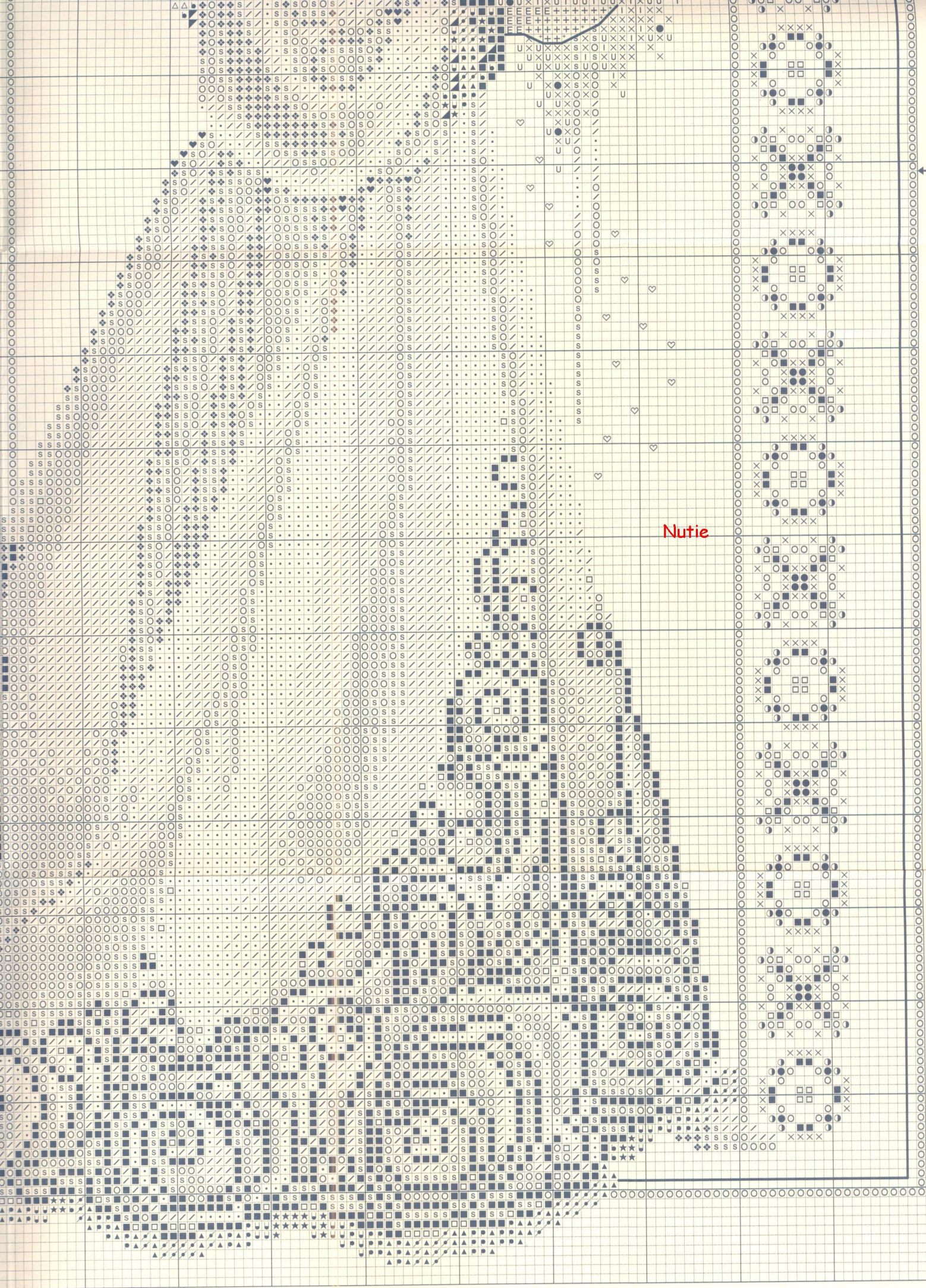




Nutie

Nutie





Nutie